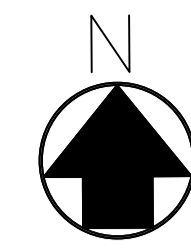
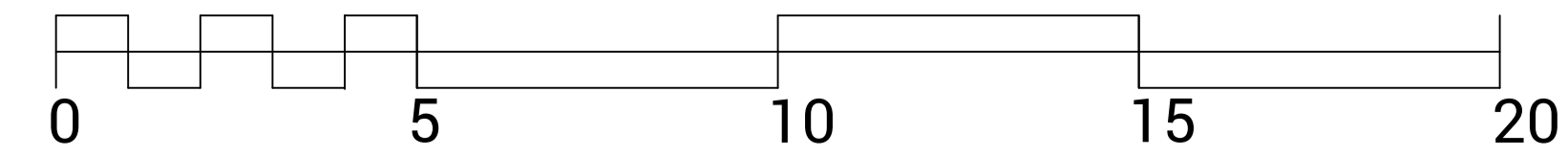


SCALE 1:100

metres



This drawing has been prepared solely to obtain Planning Permission.
The scale(s) of the drawing are as noted.
All dimensions and levels must be checked on site before work is started.
©Garsdale Design Limited, 2018

Scale 1:100 @ A1 size
except where noted

External Lighting

All new external lighting fittings shall be dark sky compliant in accordance with the current principles of the International Dark-Sky Association (IDA).

All external light fittings including Wall Lights, Floodlights, and Bollards, should protect the night sky by being:

Useful - appropriate for the setting and having a clear purpose
Targeted - directed only to where it is needed, avoiding spill into neighbouring spaces, using shielding with zero upward light

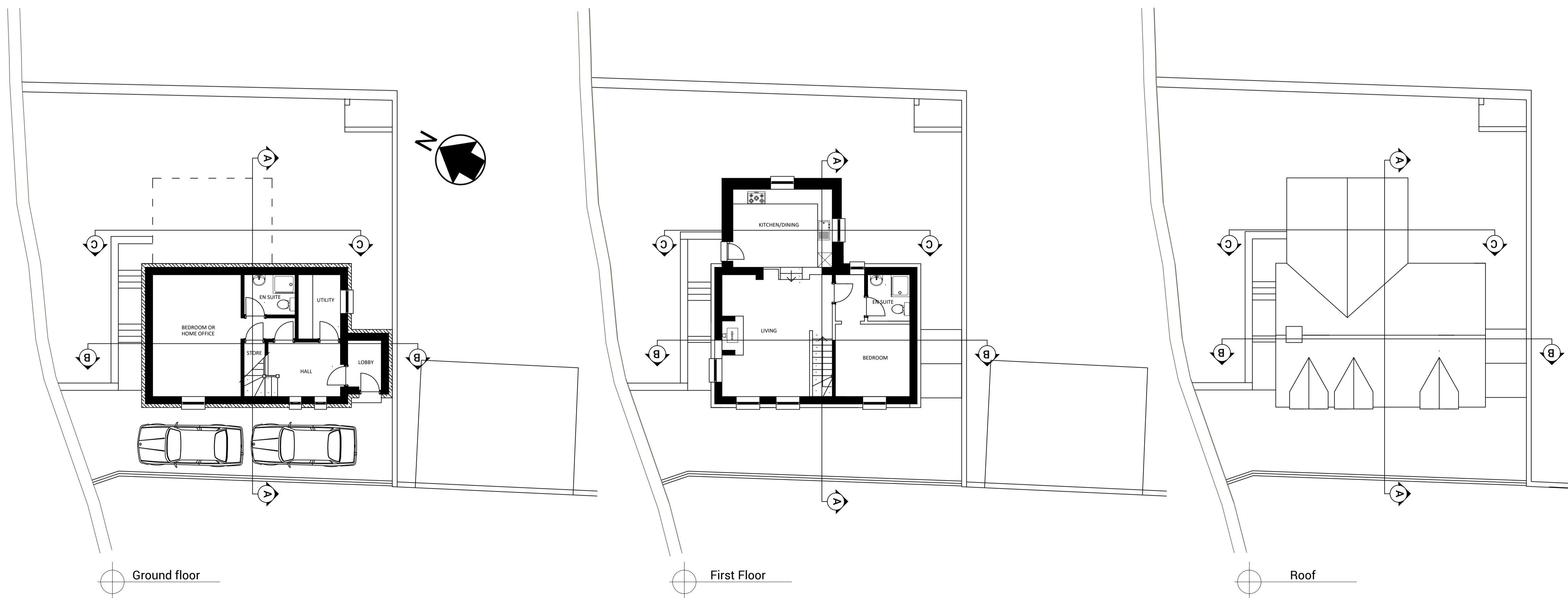
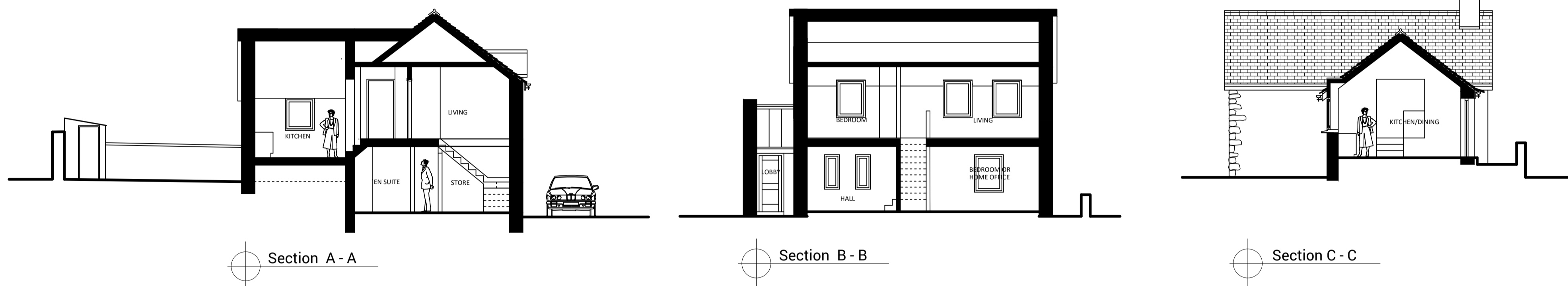
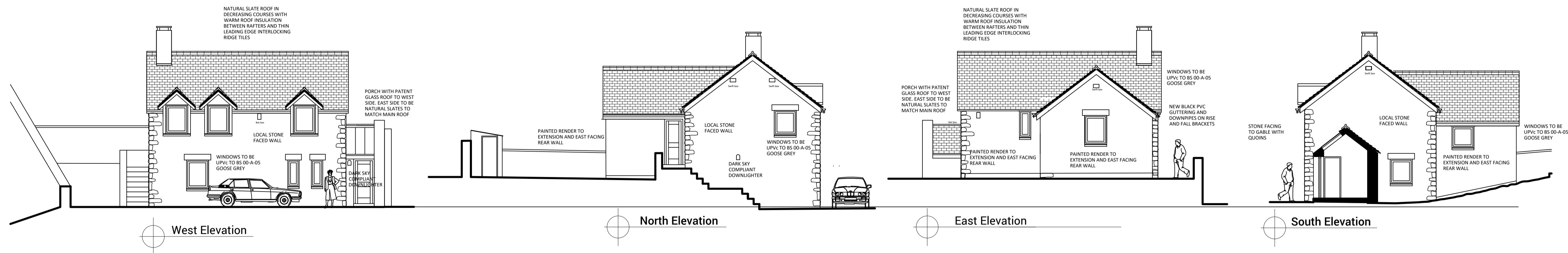
Low light level - Lux levels and Glare shall comply with UK Dark Skies Partnership design standards

Controlled - use timers or proximity sensors to dim or turn off switches when not needed, or manual switches

Colour - lamps shall be warm white 3000K or less, avoiding those with a significant blue component

Notes

- 2 no. new wall lights to be installed at 1.7m height (approx)
- Luminaire to be fully shielded and facing downwards to comply with YDNPA dark sky guidelines
- Light source not to exceed 3000K (warm white) and a maximum output of 500 lumens (SW)



No	Revision	Date	Authorised
4	Window material revised to UPVC	25_07_2023	
3	Dormers added to side elevations	15_06_2023	
2	Design altered to planning officer request	19_04_2023	
1	Design altered to planning officer request	13_04_2023	
0	Planning application submission		

Project
The Coach House
Highfield Road Sedbergh

Title
Planning
Proposal

Garsdale Design Limited
architecture - planning - heritage
urban design - geospatial
High Branthwaites Garsdale Road
Frostrow Sedbergh Cumbria LA10 5JR
phone: +44 (0) 15396 20875
email: info@garsdaledesign.co.uk
web: www.garsdaledesign.co.uk

Prepared GDL	Date March 2023	Checked GDL
Drawing Number 1747B_PA_03	Revision 4	
<small>FileName and Path C:\Users\Barbara Hartley\Documents\projects\1747 Highfield Road Stables\1747B revised proposals 2023\1747B_PA_15.06.2023 11:39 AM</small>		